

vonhey

---



---

Spring/Summer Collection 2010



Ella

Turquoise Satincord  
1 small Swarovski-Lentil

Silver (925 Sterling Silver) or  
golden (925 Sterling Silver,  
gold plated) closures



Ella

Beige Satincord,  
1 small Swarovski-Lentil

Silver (925 Sterling Silver) or  
golden (925 Sterling Silver,  
gold plated) closures



Ella

Pink Satincord  
1 small Swarovski-Lentil

Silver (925 Sterling Silver)  
or gold (925 Sterling Silver,  
gold plated) closures



Kate

Black Leathercord,  
1 gold plated Bird charm

Golden (925 Sterling Silver,  
gold plated) closures



Sienna

Beige Leathercord,  
1 gold plated Leaf charm

Golden (925 Sterling Silver,  
gold plated) closures



Midas

Wine Satincord,  
1 gold plated Coin charm

Golden (925 Sterling Sil-  
ver, gold plated) closures



Aimee

Iris Satincord,  
1 gold plated Dragonfly  
charm

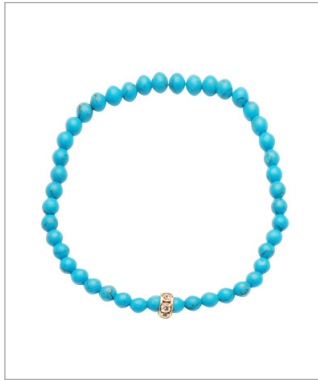
Golden (925 Sterling  
Silver, gold plated)  
closures



Stella

Navy Satincord,  
1 gold plated Star charm

Golden (925 Sterling  
Silver, gold plated)  
closures



Ashley

Elastic band of round  
Turquoise beads, 1 small  
Swarovski rondell



Mariah

Violet Satincord,  
1 gold plated Butterfly  
charm

Golden (925 Sterling Sil-  
ver, gold plated) closures



Sophia

Gold plated Necklace  
(long), 1 gold plated Coin  
charm

Golden (925 Sterling Sil-  
ver, gold plated) closures



Gipsy

Pink Satincord,  
5 Gold plated Mini-Flow-  
er, Butterfly, Heart, Daisy  
and Moon charms

Golden (925 Sterling Silver,  
gold plated) closures



Manon

Elastic band of faceted Rosé Quartz beads, 1 gold plated Coin charm



Dreamer

Silvergrey Satincord,  
1 small Obsidian Star  
bead

Silver (925 Sterling Silver) or  
golden (925 Sterling Silver,  
gold plated) closures



India

Yellow Satincord,  
1 gold plated Mini Flower  
charm

Golden (925 Sterling Silver,  
gold plated) closures



Liv

Gold plated chain bra-  
celet, 1 gold plated Coin  
charm

Golden (925 Sterling Silver,  
gold plated) closures



Rainbow

Gold chain bracelet,  
9 multicoloured Swarovski  
lentils

Golden (925 Sterling Silver,  
gold plated) closures



Drew

Elastic band of green  
faceted Aventurin beads,  
1 gold plated Flower  
charm



Roxy

Moss Satincord,  
1 Mother-of-Pearl disc

Silver (925 Sterling Silver) or  
golden (925 Sterling Silver,  
gold plated) closures



Tara

Elastic band of violet  
faceted Amethyst beads,  
1 gold plated Star charm



Daisy

Cream Satincord,  
1 gold plated Flower  
charm

Golden (925 Sterling Sil-  
ver, gold plated) closures



Hearty

Ivory Satincord,  
1 gold plated Heart  
charm

Golden (925 Sterling Sil-  
ver, gold plated) closures



Ella

Rosé Satincord,  
1 small Candy Jade-Lentil

Silver (925 Sterling Silver)  
or gold (925 Sterling Silver,  
gold plated) closures



Ella

Ice blue Satincord,  
1 small Swarovski-Lentil

Silver (925 Sterling Silver)  
or gold (925 Sterling Silver,  
gold plated) closures

# vonhey

---

## *About vonhey*

Alexa von Heyden was born in 1978 in Bonn, Germany. She lives in Berlin where she graduated from The Berlin University of the Arts (UdK).

Her jewellery line vonhey was founded in 2007. The idea was to create affordable but precious and rare bracelets that friends or lovers could give to each other for their birthdays or anniversaries.

Characteristics are pendants made of gorgeous stones or beads and colourful cords, which can be seen on the following pages.

All pieces are handmade and feature silver (925 Sterling Silver) or golden (925 Sterling Silver, gold plated) endings and closures. Every single piece is hand-crafted. Slight irregularities are the nature of a hand made product. Due to the limited availability of stones and beads every collection is limited. The bracelets are available in three different sizes: Small (15 cm), Medium (16 cm) and Large (17 cm).

## *Contact:*

vonhey/ Alexa v. Heyden  
Fehrbelliner Straße 38  
10119 Berlin  
Germany  
Tel. 0049 - (0)30 - 440 47 607  
e-mail: [hey@vonhey.com](mailto:hey@vonhey.com)  
[www.vonhey.com](http://www.vonhey.com)



White



Antique White



Ivory



Beige



Glimmer



Toffee



Light Pink



Rosé



Strawberry



Light Coral



Light Peach



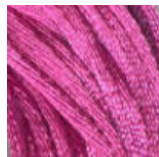
Peach



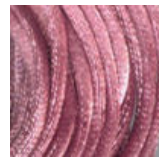
Coral



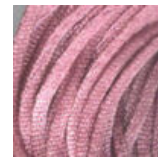
Pink



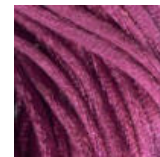
Fuchsia



Mauve



Antique Rosé



Light Plum



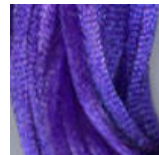
Plum



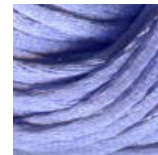
Dark Plum



Purple



Violet



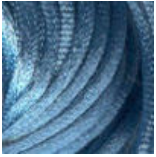
Iris



Lavender

# vonhey

---



Antique Blue



Bluemist



Grey Blue



Light Blue



Blue



Navy



Sapphire Blue



Pool



Turquoise



Jade



Seafoam



Mint



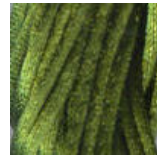
Apple



Moss



Green



Willow



Russian Green



Lime



Lemon



Buttercup Flower



Yellow



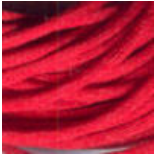
Mango



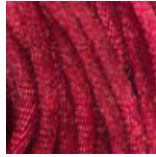
Rust



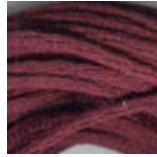
Orange



Red



Wine



Cranberry



Caramel



Grey



Black



Leather - diverse